



Frontek SMALL TO XXL SIZES



Ventilated
facades



Sustainable
construction



Building
rehabilitation



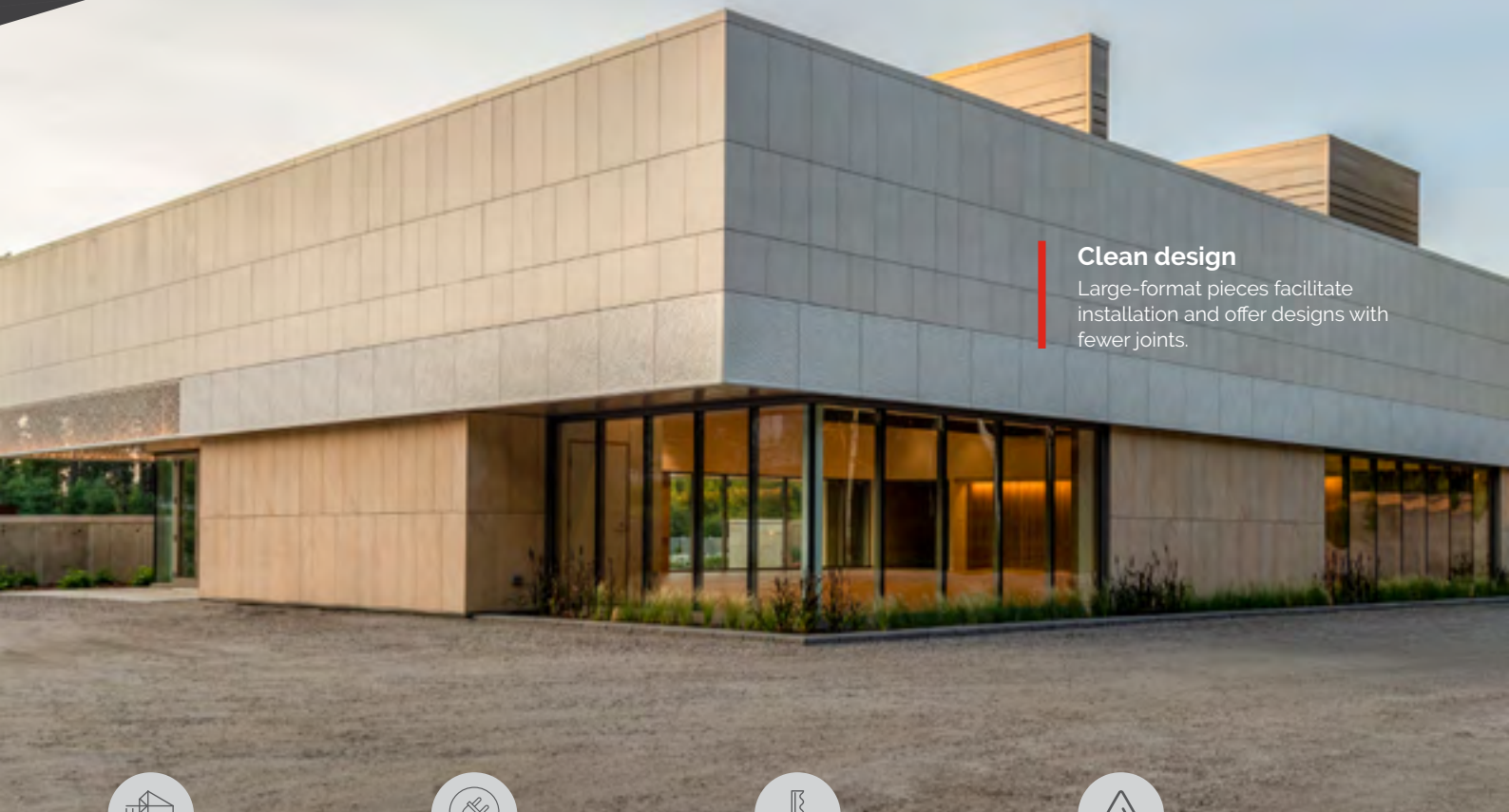
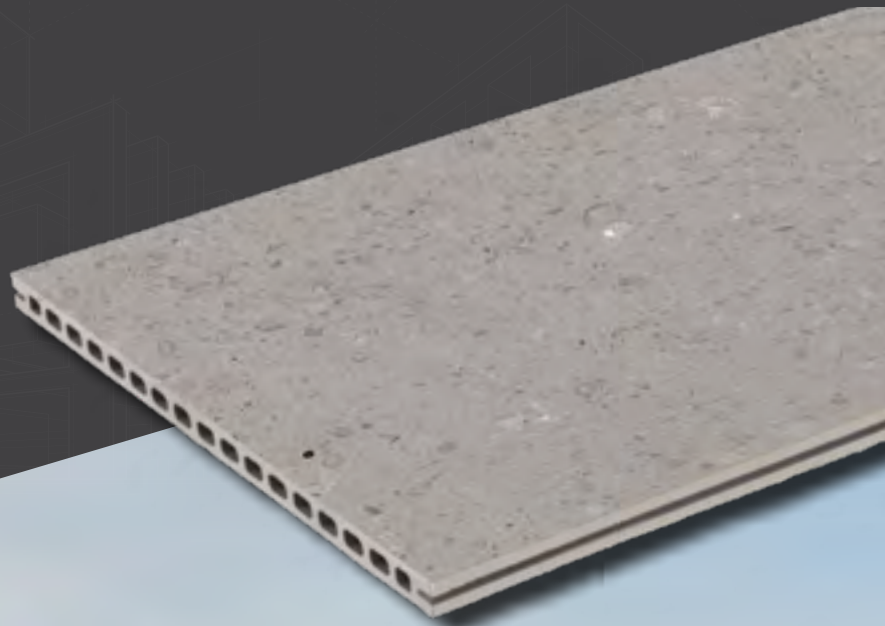
Lightness and
durability

XXL SIZES

31,49 x 63"
80 x 160 cm



Large-format pieces up to 39,37 x 118,11", allowing architectural designs with wide and innovative façades. The manageable size of 31,49 x 63" requires an anchoring system similar to the standard piece. This range allows the installation horizontally and vertically, expanding its aesthetic and functional options.



Clean design

Large-format pieces facilitate installation and offer designs with fewer joints.



Quick and easy install

Efficient construction processes and shorter times than traditional systems.



Energy efficiency

Reduce air conditioning and heating consumption by up to 35%.



Thermal and acoustic insulation

Significantly reduce noise from the outside and also acts as insulation against solar radiation.

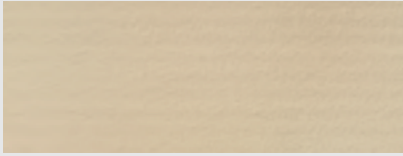
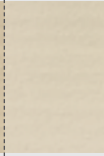
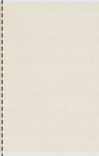

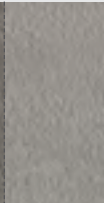
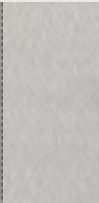

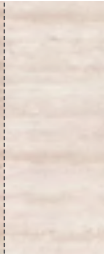
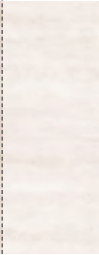

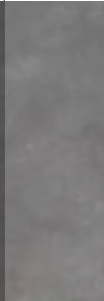
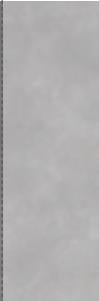


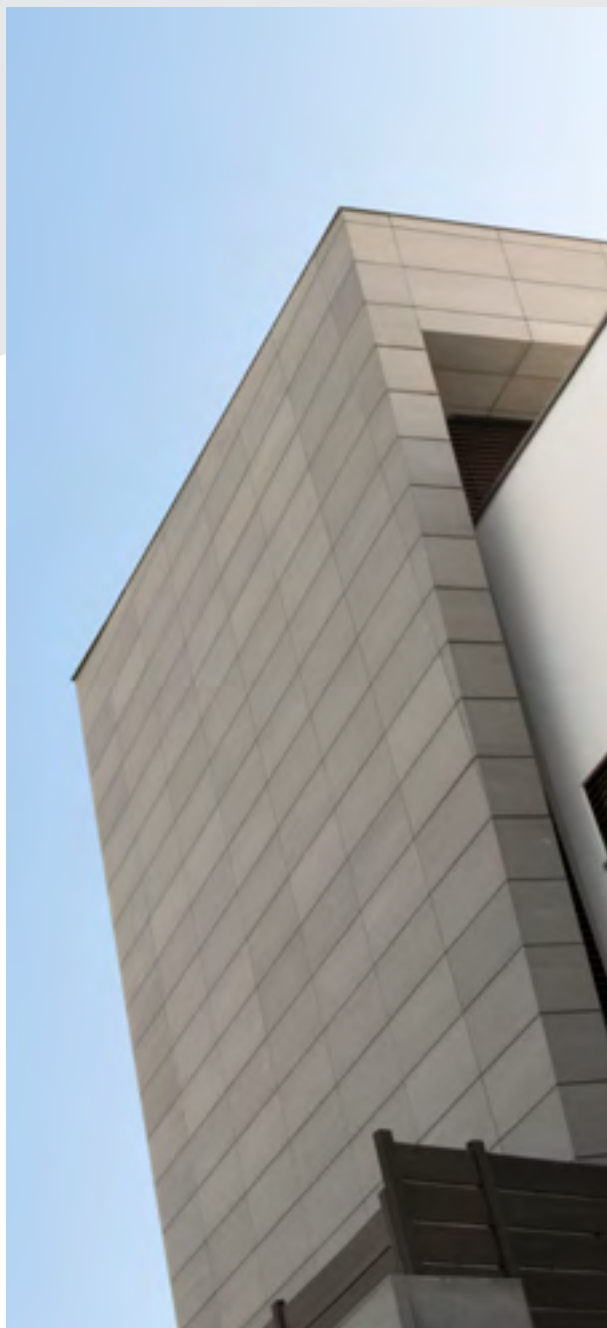
Lowest water absorption and highest breaking load

Maximum resistance to exterior conditions.

Standard SIZES

Lenght

	31.49" 80 cm	39.37" 100 cm	47.24" 120 cm
11.81" 30 cm			
15.75" 40 cm			
19.68" 50 cm			
23.62" 60 cm			



Colour variety

Different pieces with a line of continuity.



Linear thermal expansion coefficient

UNE-EN 10545-8



Resistance to staining

$\leq 9 \times 10^{-6} / ^\circ\text{C}$
UNE-EN 10545-14/3-5



Resistance against thermal shocks

UNE-EN 10545-9

Any model combinable with

Volume



V1001



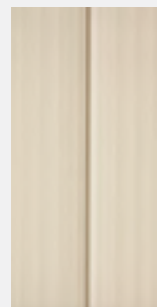
V1002



V1003



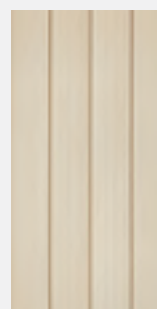
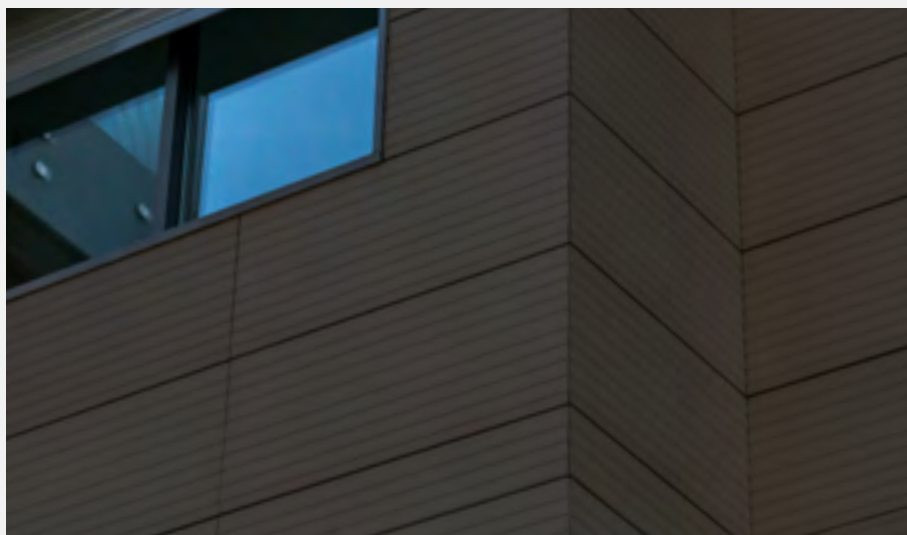
V1004



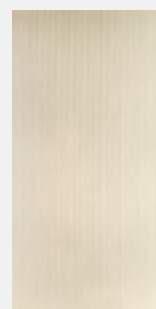
V1005



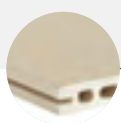
V1006



V1007



V1008



V1001



V1002



V1003



V1004





CONTACT US



www.frontek-usa.com



+1 (914) 918-2211



dotan@frontek-usa.com



1695 Curtiss Court,
La Verne, CA 91750